

SUSTAINABLE GROUNDWATER MANAGEMENT IN THE TRACY SUBBASIN

WHAT IS SGMA?

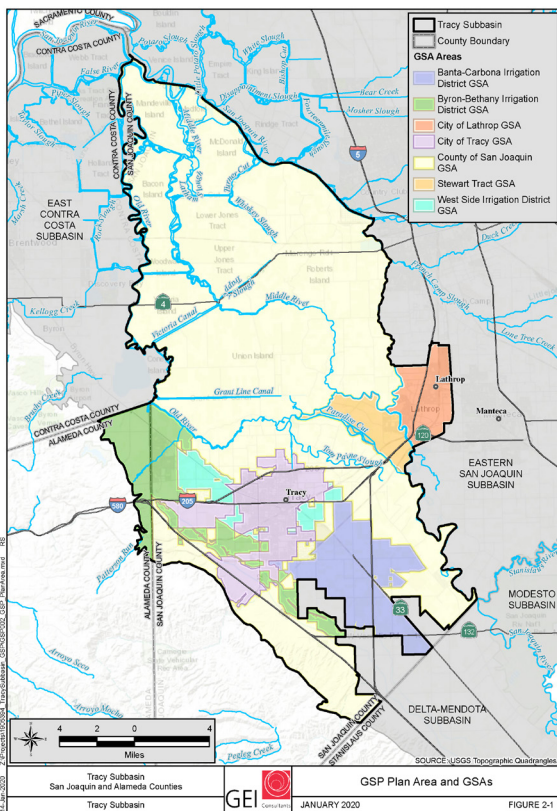
The **Sustainable Groundwater Management Act**, known as “SGMA” (pronounced sig-ma), is a California State law that was passed in 2014. The goal of SGMA is to ensure the long-term sustainable management of the state’s groundwater resources. SGMA requires agencies throughout California to meet certain requirements. These include:

- Form new Groundwater Sustainability Agencies
- Develop and adopt a Groundwater Sustainability Plan
- Update the plan every five years
- Achieve sustainability by 2042

HOW DOES THIS IMPACT ME?

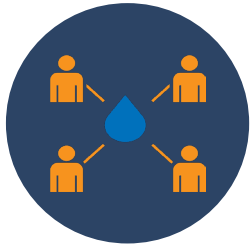
Some or all of the water for your home, business, or farm may come from groundwater. This may be true even if you get your water from your local city or irrigation district. This groundwater comes from the **Tracy Subbasin**, shown to the left, which overlies our region.

Local agencies in the Tracy Subbasin are **required to comply with SGMA**. These agencies are developing a **Groundwater Sustainability Plan** that will identify actions to ensure the long-term reliability and quality of our communities’ groundwater resources. However, if the requirements of SGMA are not met, the State may intervene and impose additional fees.



Learn more at tracysubbasin.org

WHAT IS BEING DONE?



Seven Groundwater Sustainability Agencies have formed in the Tracy Subbasin.

This includes the Banta-Carbona Irrigation District, Byron Bethany Irrigation District, County of San Joaquin, City of Lathrop, City of Tracy, Stewart Tract, and the Westside Irrigation District.



These agencies are collaboratively developing one Groundwater Sustainability Plan for the Tracy Subbasin.

The groundwater sustainability plan is due to the state on or before **January 31, 2022**. The draft plan is anticipated to be released for public review in summer 2021.



The Groundwater Sustainability Plan will provide a roadmap for future management of the subbasin's groundwater resources.

The plan will identify a water budget for the subbasin and define what level of pumping is considered "sustainable." It will also identify projects and actions to manage the subbasin's groundwater resources.

HOW CAN I GET INVOLVED?

Stay informed. Register as an interested party on the subbasin website and be notified of opportunities to participate in development of the plan.

Attend public meetings and workshops. Visit the website for a list of regularly-scheduled meetings and public workshops.

Provide input. Comments on the draft plan chapters, once released, will be collected through an online form on the subbasin website.

Learn more at tracysubbasin.org